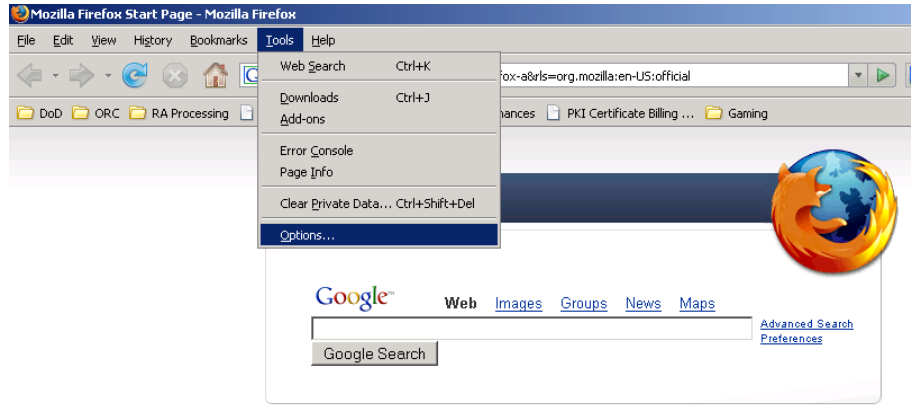


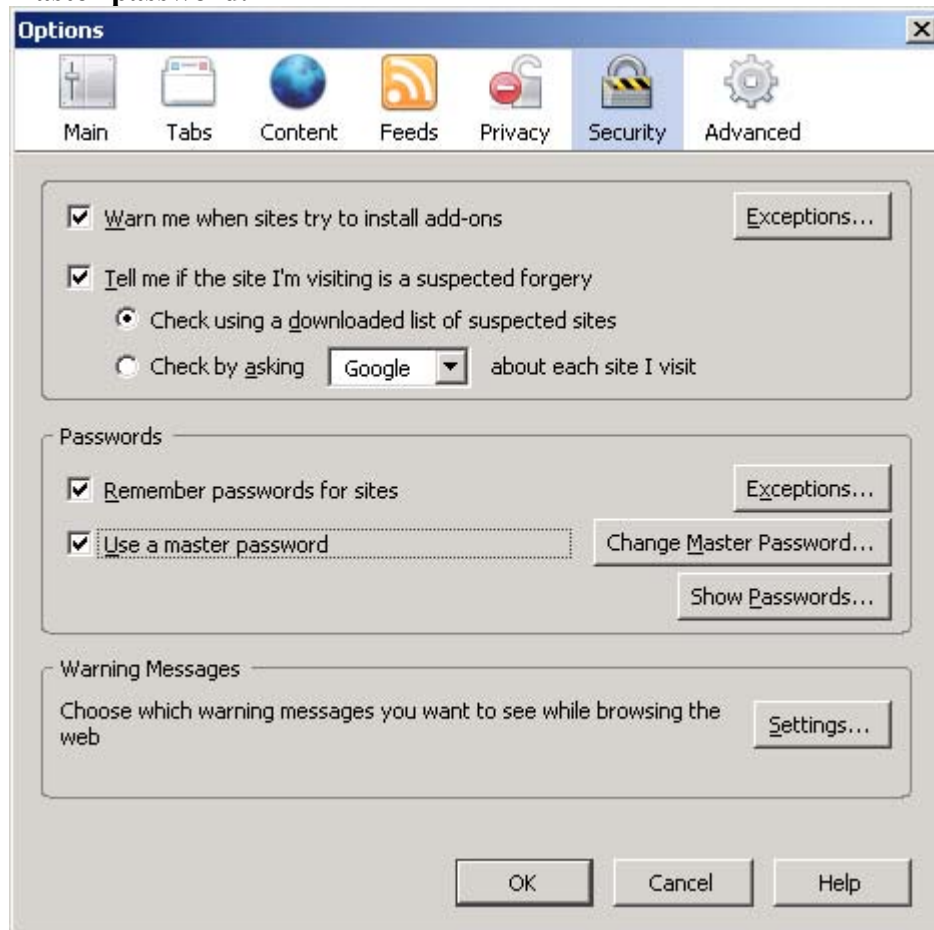
Setting the Master Password in Mozilla Firefox

Mozilla Firefox protects certificate private keys by setting a Master Password on the entire Firefox certificate store. The Master Password also controls the Firefox Password Manager.

1. From the Firefox menu bar, select **Tools**→ **Options...**



2. In the Options dialogue box, click the **Security** icon; then check the box to **Use a master password**.



3. Assign and confirm a master password and click the **OK** button

Change Master Password [X]

A Master Password is used to protect sensitive information like site passwords. If you create a Master Password you will be asked to enter it once per session when Firefox retrieves saved information protected by the password.

Current password: (not set)

Enter new password: *****

Re-enter password: *****

Password quality meter

Please make sure you remember the Master Password you have set. If you forget your Master Password, you will be unable to access any of the information protected by it.

OK Cancel

4. You have successfully set the Master Password on Mozilla Firefox.