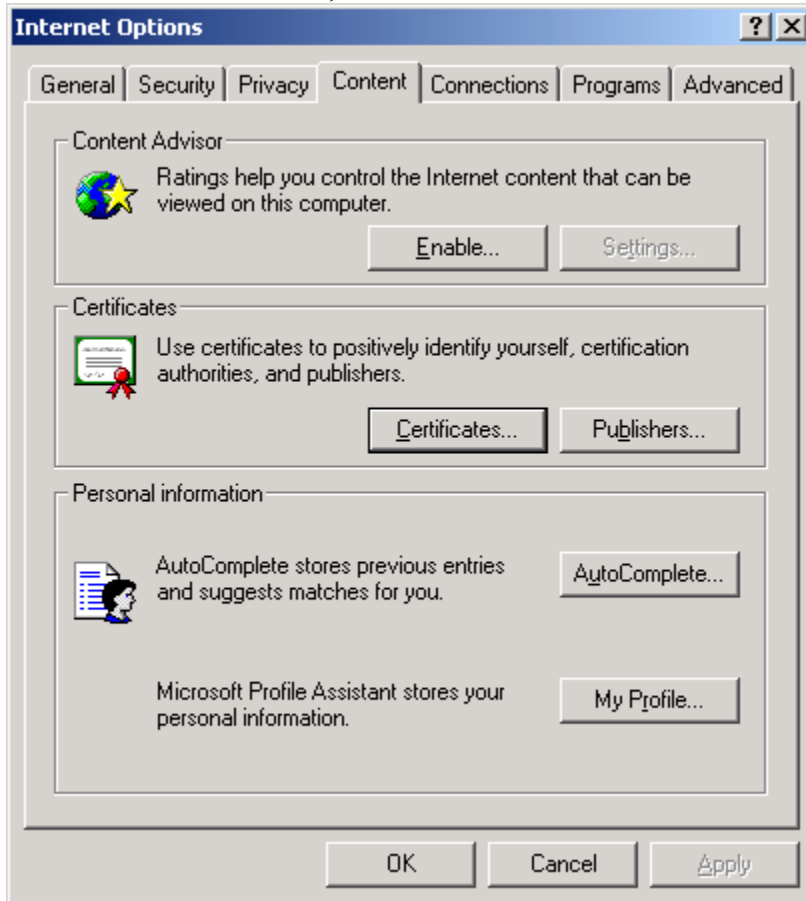


1. Click on the **"Tools"** menu option and then click **"Internet Options..."**.

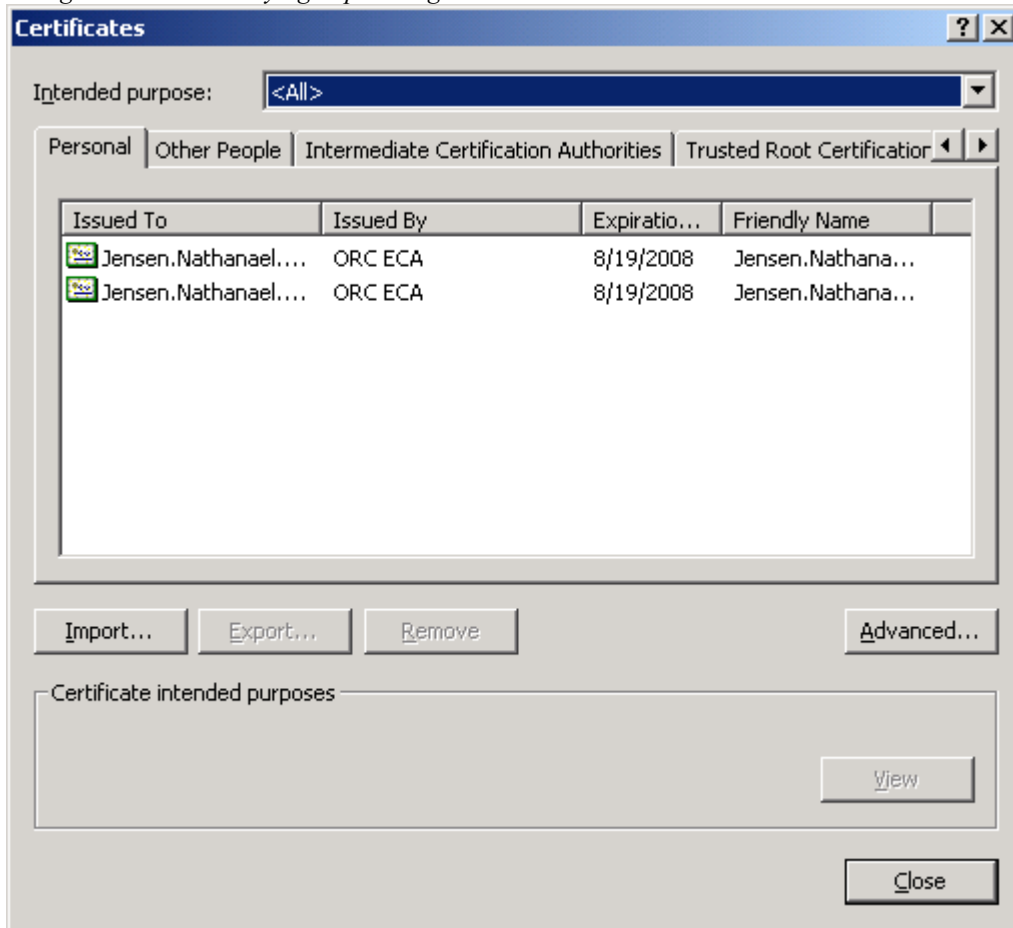


2. Select the **Content** tab, then click the **Certificates...** button.



3. In the Certificates dialogue box, click on the **Import...** button.

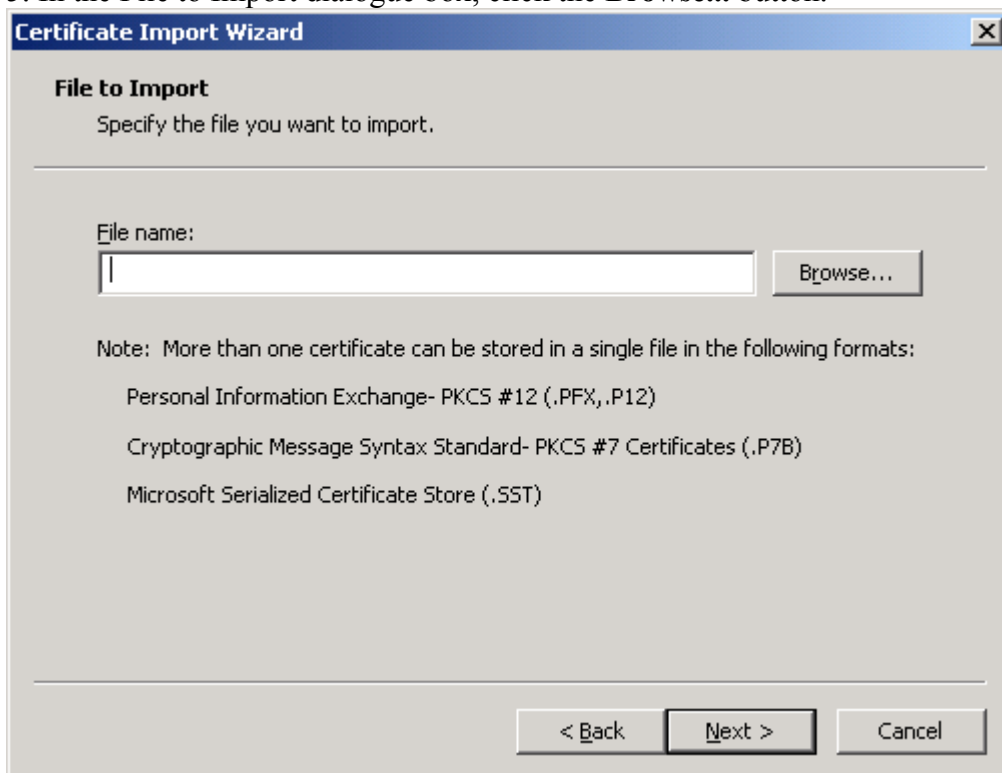
*Note: You do not need to have an entry selected; you do not even need to have any entries listed in the dialogue box. You are trying to put thing into this box.*



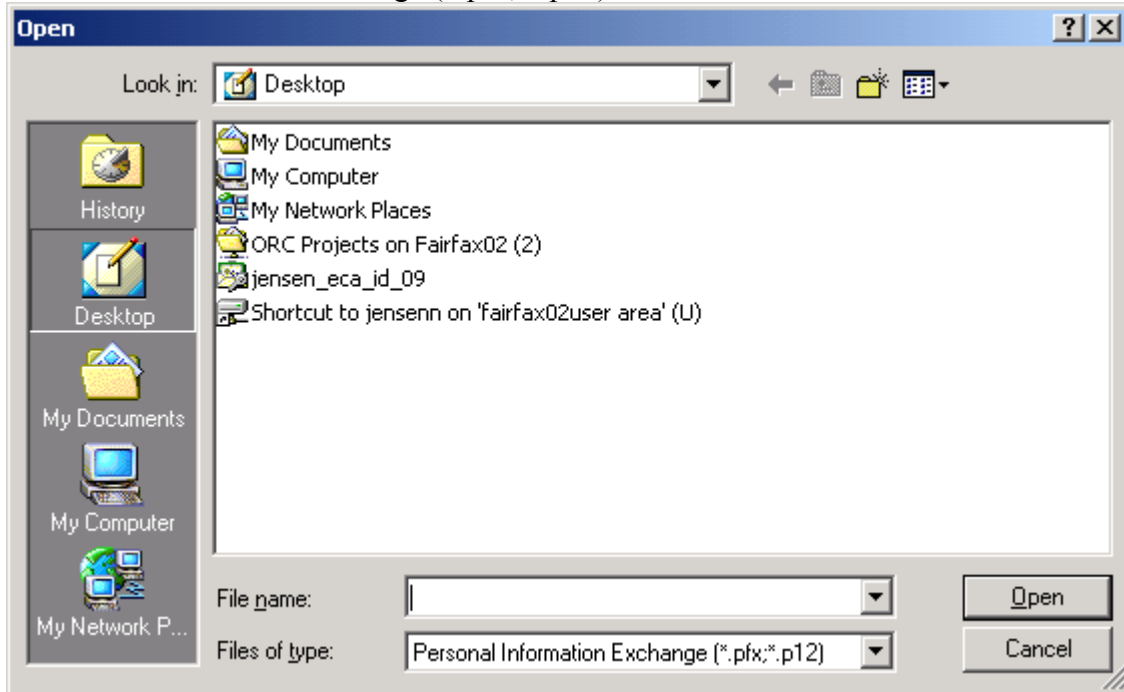
4. When the Certificate Import Wizard pops up, click on the **Next >** button.



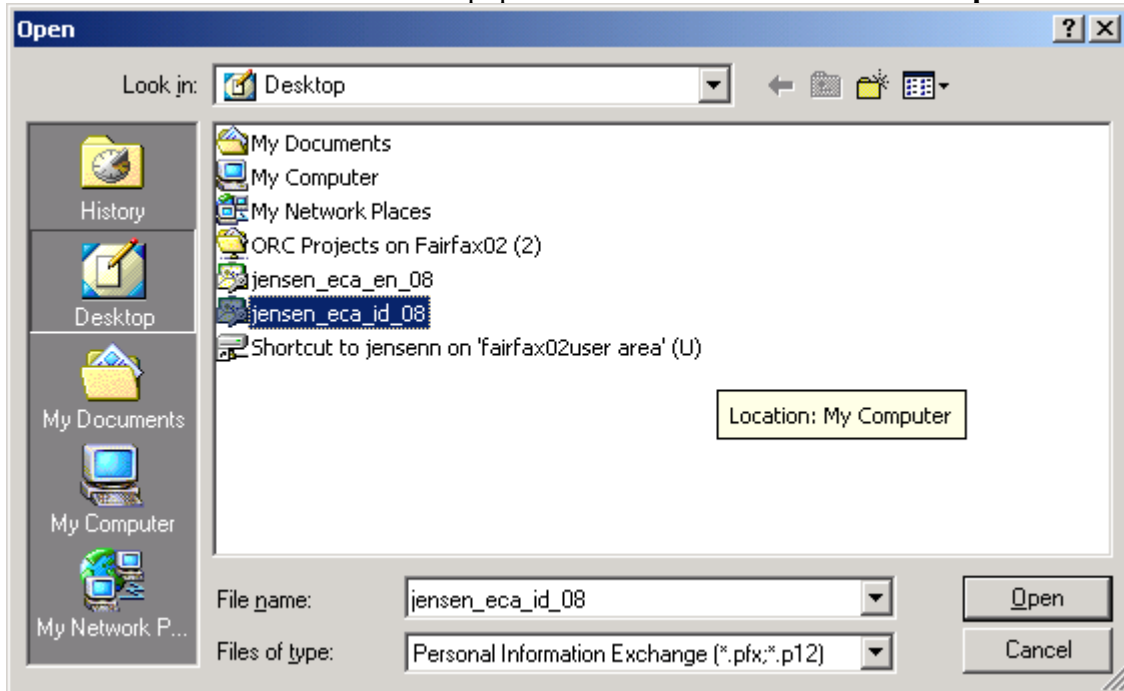
5. In the File to Import dialogue box, click the **Browse...** button.



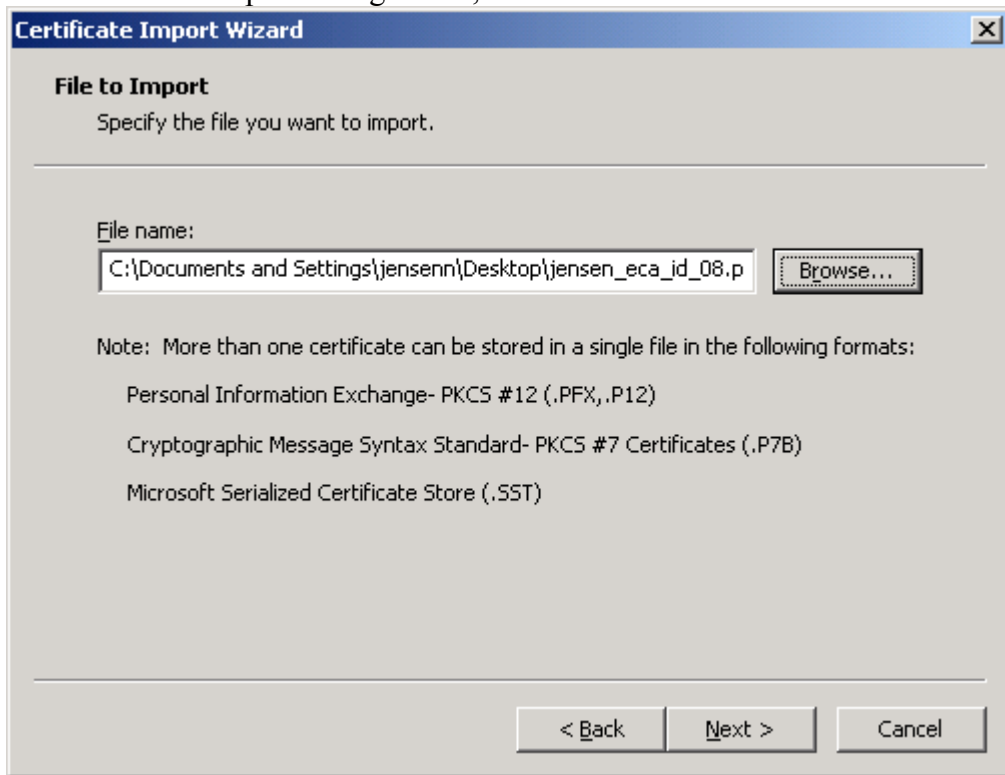
6. In the Open dialogue box, make sure the **Files of type:** pull down menu reads "Personal Information Exchange (\*.pfx, \*.p12)"



7. In the Open dialogue box, navigate to the location where your certificate backup file is located. Click on the file and it will pop into the filename field. Click the **Open** button.



8. In the File to Import dialogue box, click the **Next >** button.

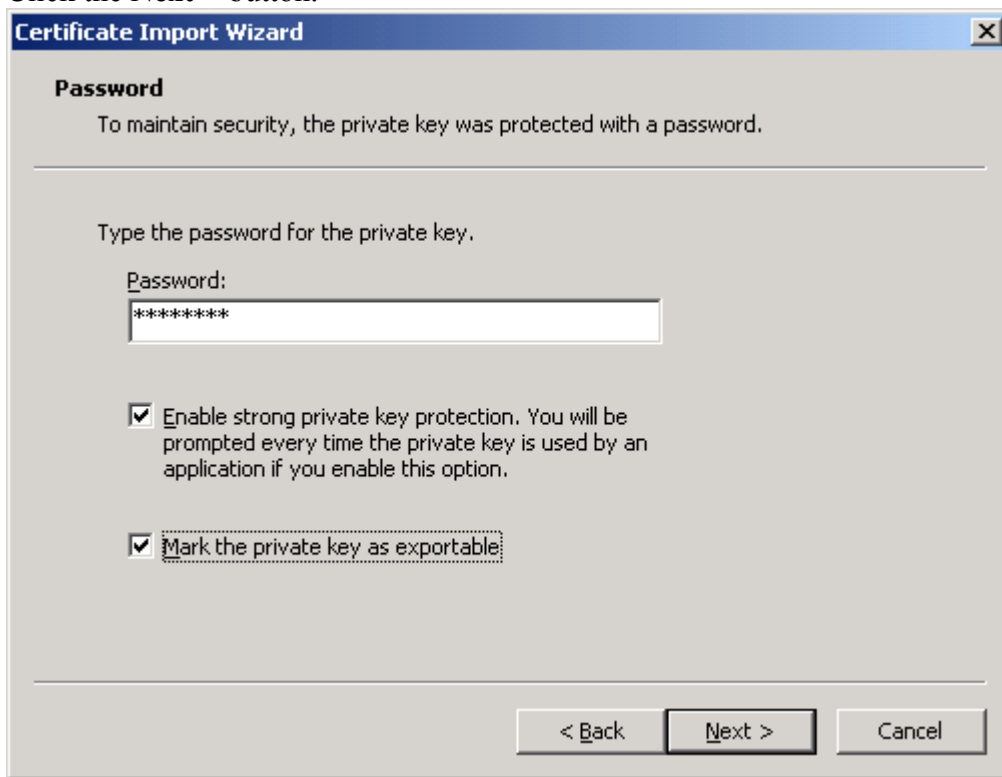


9. In the Password dialog box, check both of the check boxes to **Enable strong private key protection** and **Mark the private key as exportable**.

*NOTE: If you do not **Mark the private key as exportable**, no one (including you) will be able to make a new export (or backup) copy of your certificate from this installaion.*

Enter the password that protects the file from unauthorized access. *This is the password that you assigned to the file when it was created.*

Click the **Next >** button.



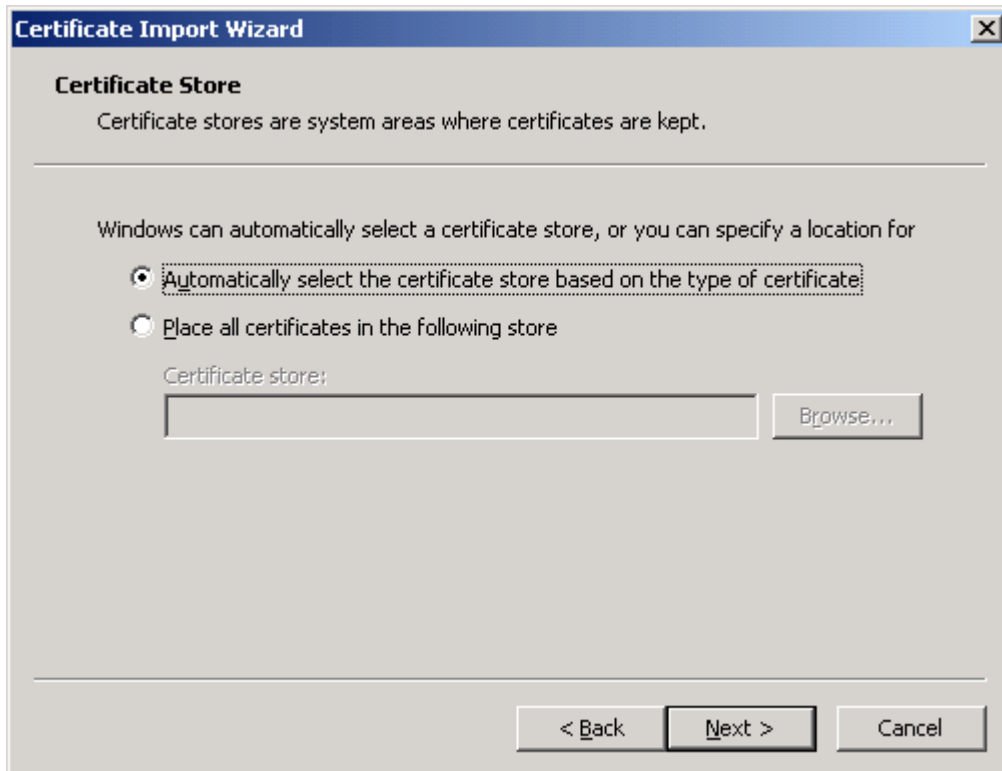
The screenshot shows a Windows dialog box titled "Certificate Import Wizard" with a close button (X) in the top right corner. The dialog is titled "Password" and contains the following text: "To maintain security, the private key was protected with a password." Below this is a horizontal line. The text "Type the password for the private key." is followed by a "Password:" label and a text input field containing "\*\*\*\*\*". Below the input field are two checked checkboxes: "Enable strong private key protection. You will be prompted every time the private key is used by an application if you enable this option." and "Mark the private key as exportable". At the bottom of the dialog are three buttons: "< Back", "Next >", and "Cancel".

10. Either of these two options is acceptable:

**Automatically select the certificate store based on the type of certificate**

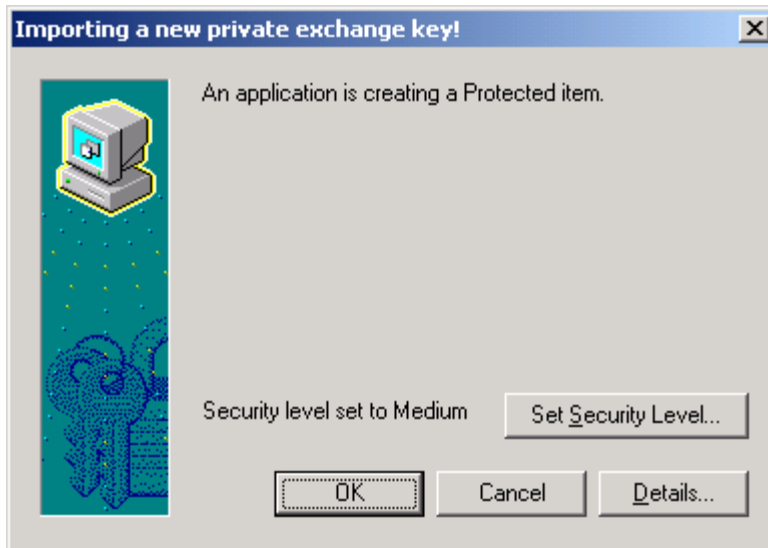
**Or Place all certificates in the following store: Personal**

Click the **Next >** button.



11. At Completing the Certificate Import Wizard, click the **Finish** button.

12. In the Importing a new private exchange key! dialogue box, click the **Set Security Level...** button.



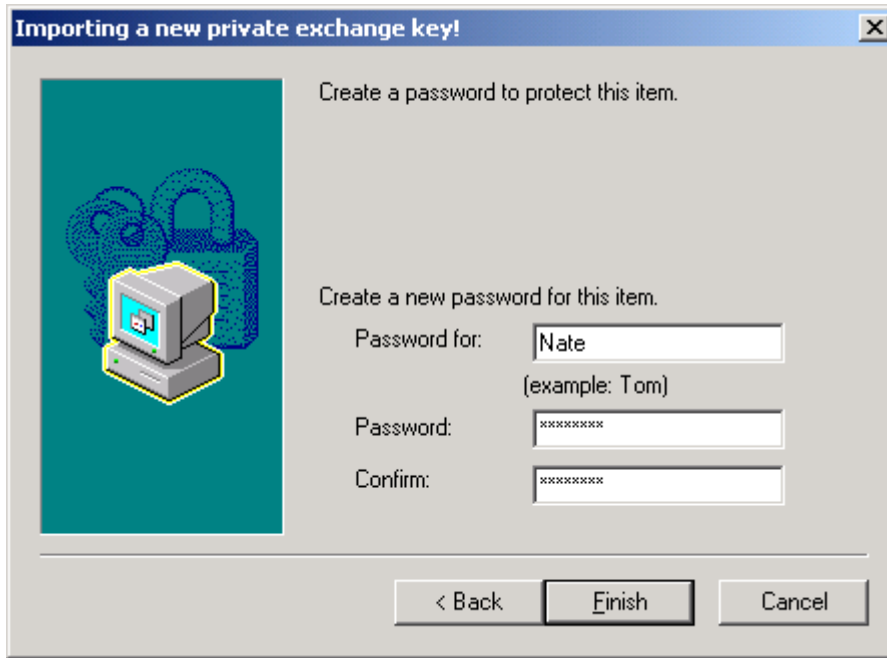
13. Set the security level selector to **High** and click the **Next >** button.



14. If you have a blank text box titled **Password for:** you must enter a label for this certificate.

*Windows XP users are not allowed to type in this textbox (some don't even see it); all certificates are labeled CryptoAPI Private Key in Windows XP*

Now assign and confirm a password to the certificate Private Key that you are installing. Then click the **Finish** button.



5. The Importing a new private exchange key! dialog box should now read "Security level set to High", click the **OK** button.



16. At "The import was successful."; click the **OK** button.

